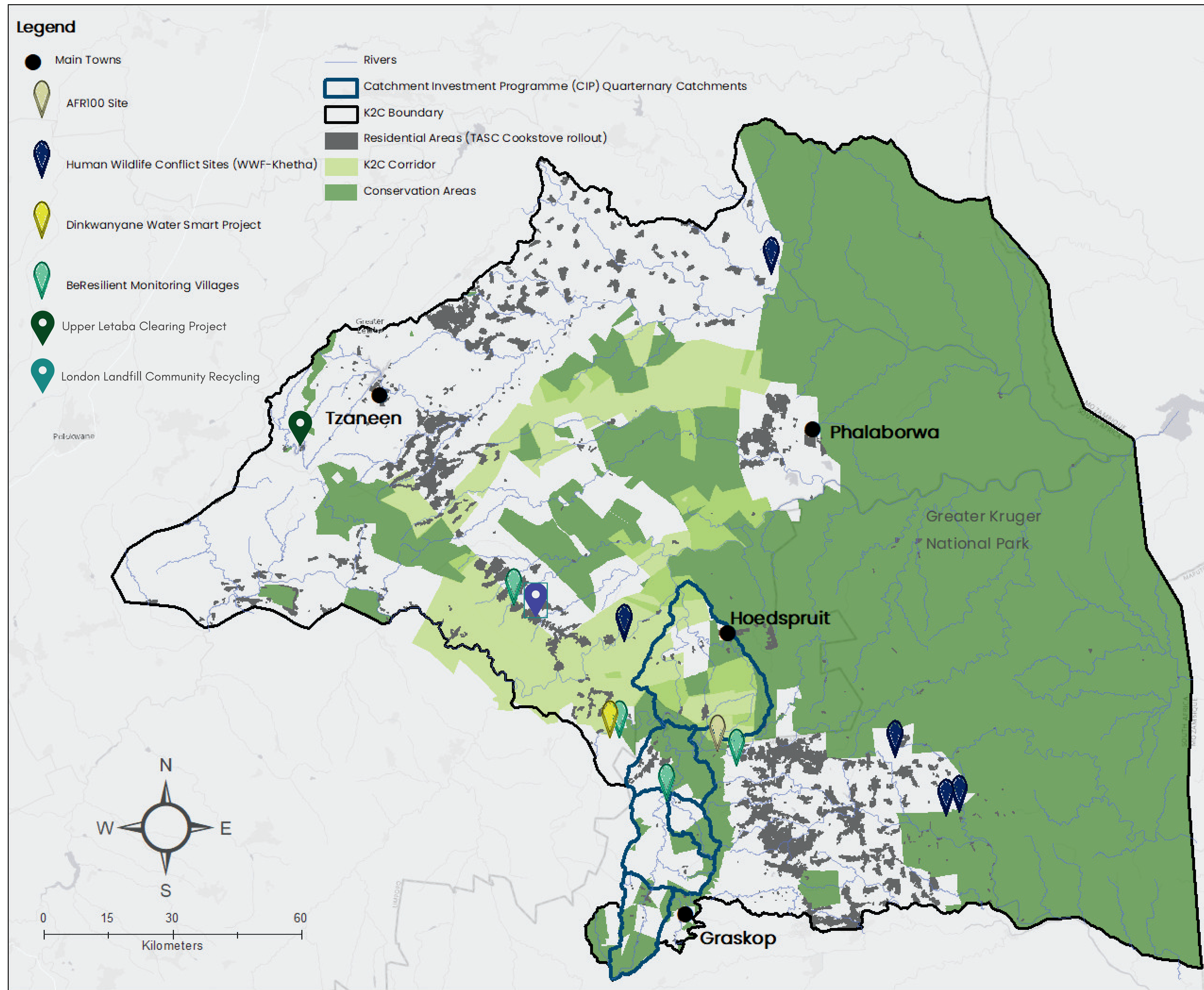


# KRUGER TO CANYONS BIOSPHERE REGION

## 2024 PROJECT IMPLEMENTATION

| PARTNERING TO ACHIEVE A SUSTAINABLE FUTURE FOR ALL LIFE IN THE K2C BIOSPHERE |



**K2C Catchment Investment**  
This initiative aims to finance and implement a Catchment Investment Program (Water Fund) to protect the state of the Blyde River Catchment, and other key catchments into the future. This will be achieved through a more integrated and collaborative approach to restoring and protecting key catchments in the K2C region that benefit multiple downstream stakeholders. Key implementation initiatives include alien invasive plant clearing, sustainable rangeland management and protected area expansion.  
*PARTNERS: Conservation South Africa & The Nature Conservancy*

**K2C Corridor**  
This initiative works to secure and improve management of key biodiversity and water corridors linking the Greater Kruger to the escarpment and Blyde River Canyon Nature Reserve. These corridors will secure critical riparian habitats which provide breeding grounds and migratory routes between the Lowveld and the escarpment for various threatened species.  
  
Through this project properties will be better secured through various biodiversity stewardship mechanisms such as the formal declaration of protected areas (nature reserves or protected environments) or more flexible conservation agreements (OECMs).

**AFR100 ( African Forest Landscape Restoration Initiative)**  
The AFR100 initiative has been implemented since July 2022 in partnership with Conservation South Africa (CSA). The aim of this project is to restore 600ha of degraded land by clearing Alien Invasive plants in order to promote natural regeneration of indigenous vegetation. The secondary goal of the AFR100 project is to explore potential value chain opportunities such as using the Alien Invasive off-cuts to produce biochar, wood vinegar and wood chips which will support the establishment of SMME's to empower communities adjacent the Protected Area.  
*PARTNERS: Conservation South Africa*

**BeResilient: Implementing citizen science for freshwater health and IKS for climate risk adaptation**  
GOAL 1: To establish a Citizen Science freshwater health monitoring programme in the K2C landscape aimed at building climate resilience in the K2C landscape.  
GOAL 2: Analyze indigenous knowledge systems (IKS) used for early warning systems, climate risk adaptation, and how these techniques are used historically and, in the present, to reduce the Climate Risk vulnerability in our local communities.  
*PARTNERS: UNESCO*

**K2C Demonstration Site (Phiring Village)**  
This site in the village of Phiring demonstrates how sustainable land-use practices are enhancing eco-system services while contributing to sustainable livelihoods and creating a resilient community. This is achieved through climate smart agriculture, rangeland management & tourism initiatives.  
*PARTNERS: Conservation South Africa & Hoedspruit Hub*

**Upper Letaba Clearing Project**  
This project focuses on removing alien invasive trees around the town on Haenertsburg in the Upper Letaba Catchment. This is to offset water used in the catchment by Coca-Cola.  
*PARTNERS: The Nature Conservancy & Coc-Cola*

**London Landfill Community Recycling**  
This waste management beneficiation centre, located at the London Landfill site (Maruleng Municipality), aims to stimulate a waste circular economy for waste reclaimers and entrepreneurs within the K2C landscape.  
*PARTNERS: TASC & Maruleng Municipality*

**Cookstove Project**  
A carbon project distributing more than 450 000 improved cookstoves across the K2C region to help reduce fuel loads and as a result carbon emissions across the landscape.  
*PARTNERS: TASC*

**Absorbent Hygiene Products project**  
The AHP project is a waste management approach, that looks at developing a collaborative governance system suitable for the disposal of diaper waste. The project uses a bottom-up approach of a co-governance model, through multi-stakeholder collaboration in 2x Pilot sites, that will result in the responsible disposal of diapers.  
*PARTNERS: University of the Western Cape*

**Human-Wildlife Conflict in the Greater Kruger Landscape**  
Finding mitigation measures to reduce Human-Wildlife Conflict (HWC) and create spaces for Human-Wildlife coexistence for communities living adjacent to protected areas.  
*PARTNERS: WWF-Khetha*

